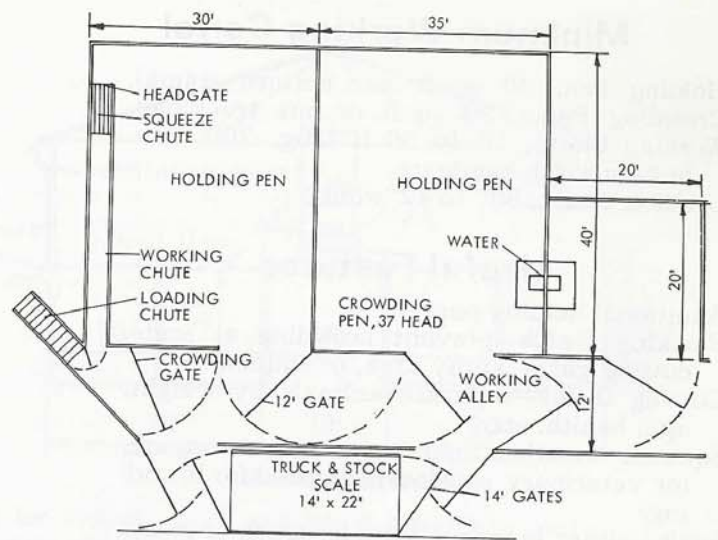
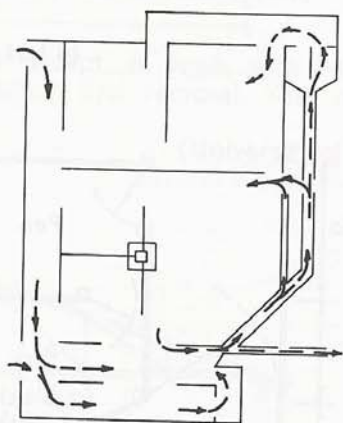
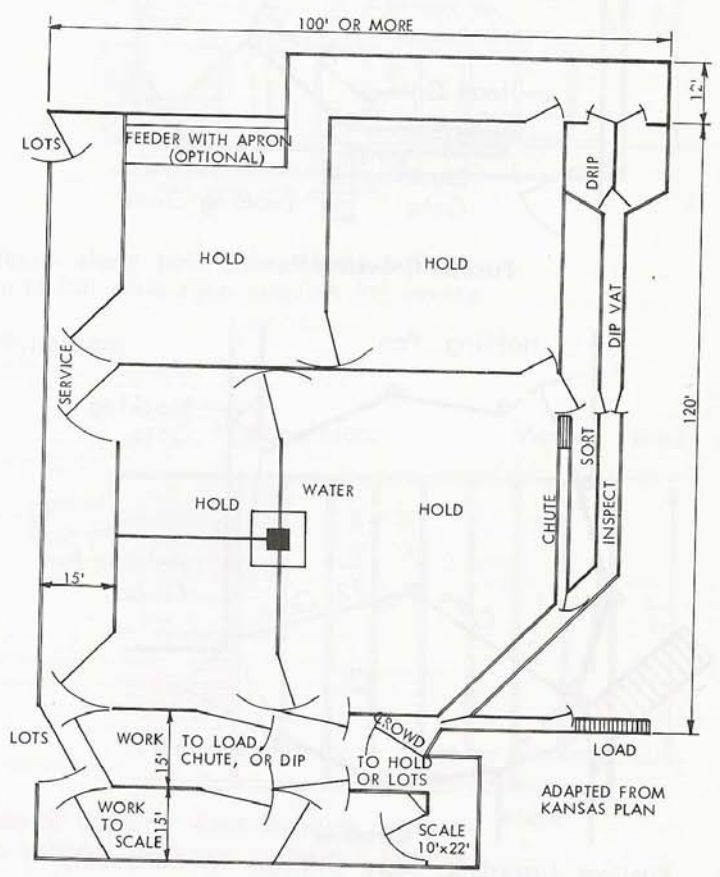


200 HEAD



200 HEAD OR MORE



600 HEAD OR MORE

Layout For Cattle Dipping Vat

Dipping vats are suitable for larger operations which can justify the cost of the vat, relative to the cost of high-pressure spray equipment. Dipping controls external parasites more positively than spraying, unless very good spraying equipment and practices are used. Grade around the vat to divert all surface run-off. Dispose of used dip only after completely following the chemical manufacturers' detoxification recommendations.

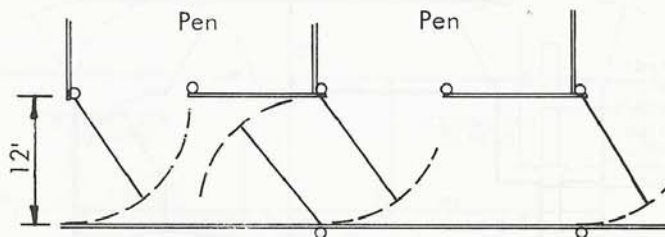
ADAPTED FROM KANSAS PLAN

Minimum Working Corral

- Holding Pen**, 20 sq ft per mature animal.
- Crowding Pen**, 150 sq ft or one truckload.
- Working Chute**, 18 to 30 ft long, 26" max. bottom width headgate.
- Loading Chute**, 30" to 42" wide.

Useful Features

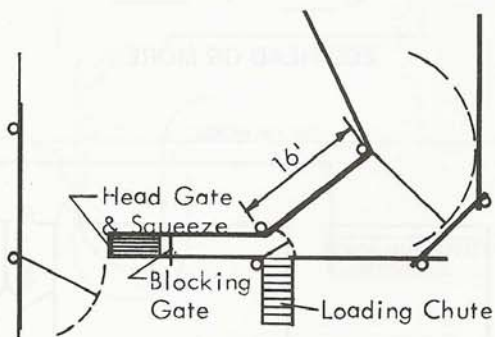
- Additional holding pens.
- Blocking Gates**—prevent crowding at scale, cutting gates, spray area, or squeeze.
- Cutting Gates**—separate animals by weight, age, health, etc.
- Squeeze**—restricts animal more than headgate, for veterinary services; required for branding.
- Scale**—either large platform for truck or stock, or portable, for use in working chute.
- Spray Pen**—8'x30' for one carload; crowding pen may be used or dipping vat.
- Sorting Alley**—10' to 12' wide.
- Provide water in lots for holding cattle overnight.
- Provide for feed and water in one holding pen to be used as bull pen.



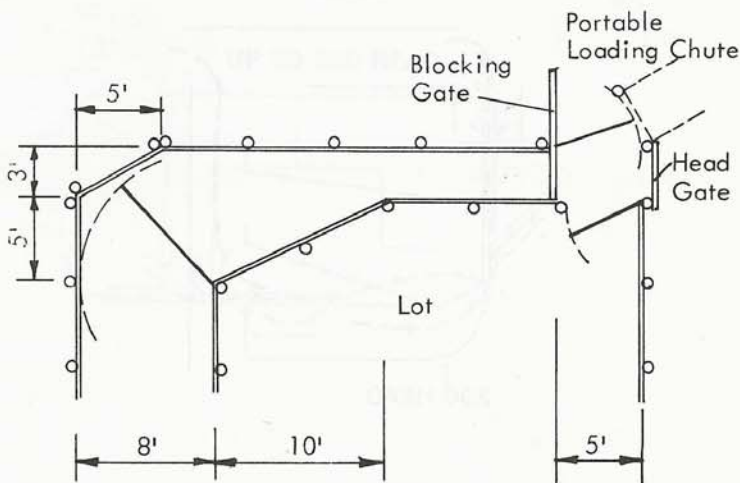
Sorting Alley

With Cross Gates, Can Be Used For Spraying & Holding

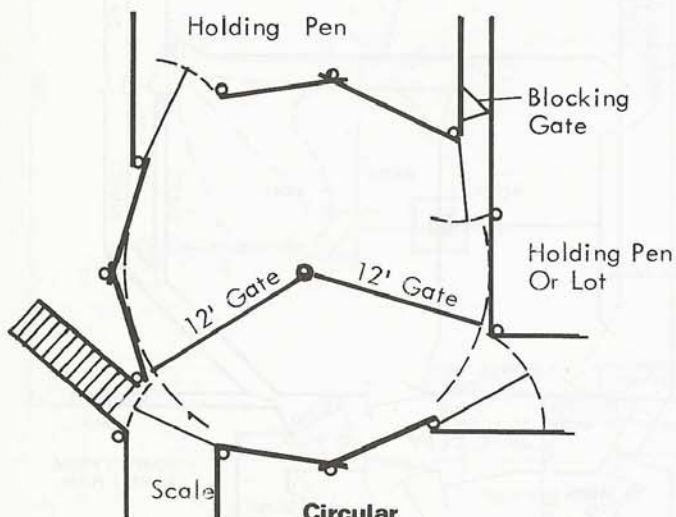
SIMPLE LAYOUTS



Funnel Crowding Pen

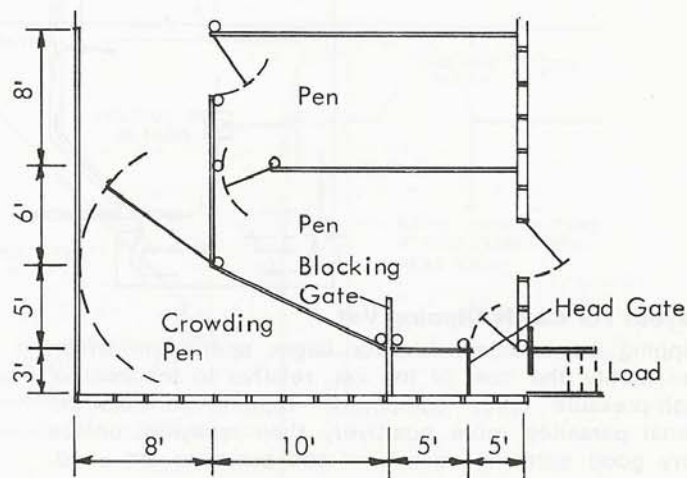


In Lot Corner



Circular

Positive Crowding, More Difficult To Construct, Less Useful For Other Purposes.



In Barn Corner